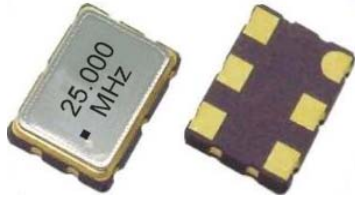




◆ VCXO7050 SMD Crystal



FEAYURES

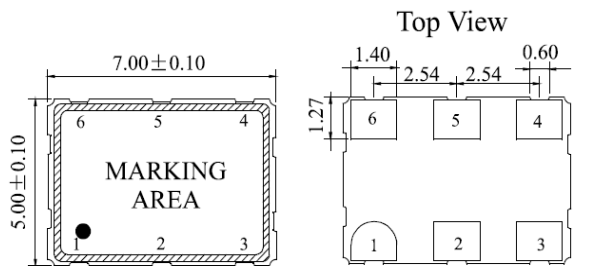
- Tri-State Enable/Disable
- Low jitter and Noise
- PECL output
- Idral for Fiber-optic communication applications ,FTTH and SONET/SDH application,Sever,FCHBA,Fibre Channel,Gigabit, and Serial ATA

◆标准规格Electrical Specifications

parameter	Condition	VCXO7050
标准频率Frequency Range F_0		1.000MHz to 150.000MHz
输出模式Output Specification		LV-PECL
调整频差Frequency Stability *	All Condiyion	$\pm 20\text{ppm}$, $\pm 50\text{ppm}$ $\pm 100\text{ppm}$
工作温度Operating Temperature Range		$-20^\circ\text{C} \sim +70^\circ\text{C}$ ($-40^\circ\text{C} \sim +85^\circ\text{C}$ option)
贮存温度Storage Temperature Range		$-55^\circ\text{C} \sim +125^\circ\text{C}$
工作电压Power suppil Voltage V_{DD}		$3.3\text{V} \pm 5\%$
输入电流Supply Current I_{DD}		90mA Max
占空比Duty Cycle	At $1/2V_{pp}$	40/60% (45/55% Option)
上升时间Rise Time T_s	$20\%2V_{pp} \sim 80\%2V_{pp}$	1nS Max
下降时间Fall Time T_r	$80\%2V_{pp} \sim 20\%2V_{pp}$	1nS Max
高低电平Output Voltag V_{OH} V_{OL}		$V_{DD} - 1.025\text{V}$ Min
		$V_{DD} - 1.62\text{V}$ Max
输出负载Output Load		50Ω to $V_{DD}-2.0\text{V}$
相位抖动Integrated phase jitter(RMS)	Integrated 12KHz to 20MHz	1pS Max
启动时间Start Time T_s		10mS Max
年老化率Aging(First Year)	$25^\circ\text{C} \pm 3^\circ\text{C}$	$\pm 2\text{ppm}$ Msx
三态功能Pin 1, tri-state function		pin 1=H or open....Output active at pin 4,5
		pin 1=L.....high impedance at pin 4,5
最小包装packing Unit		1000pcs/reel

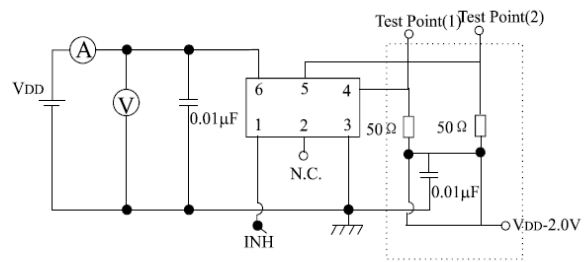
*Include:25°C tolerance,operating temperature range input voltage change, aging, load ,change shock and vibration

◆外型尺寸Mechanical Dimensions(mm)

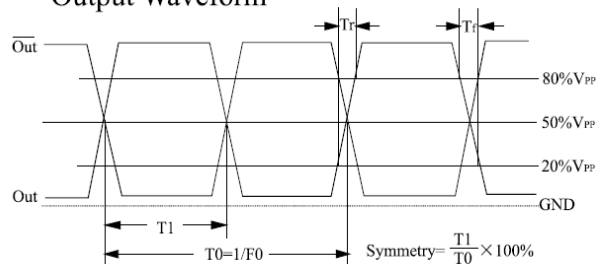


Pin	Connection
#1	Tri-State
#2	N.C.
#3	GND
#4	Comp. Output
#5	Out
#6	V_{DD}

Test Circuit

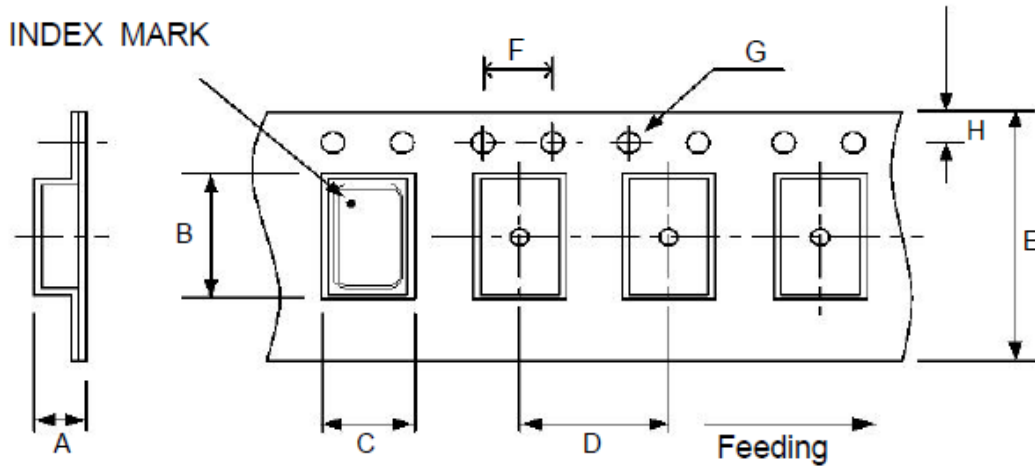


Output Waveform



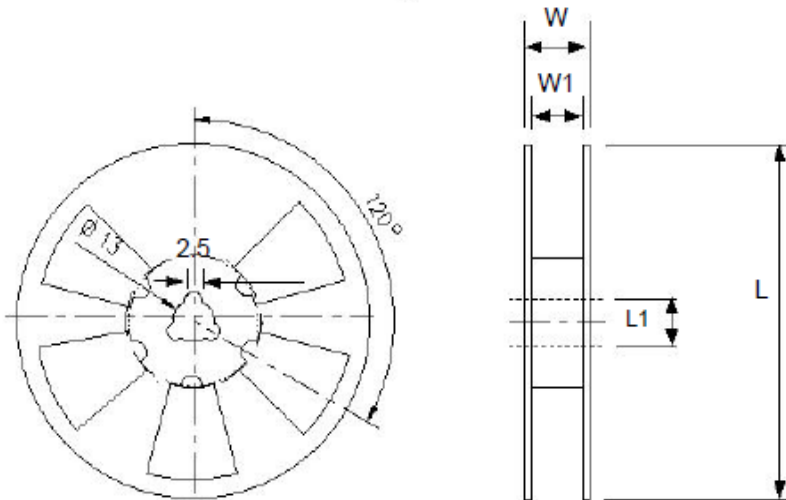
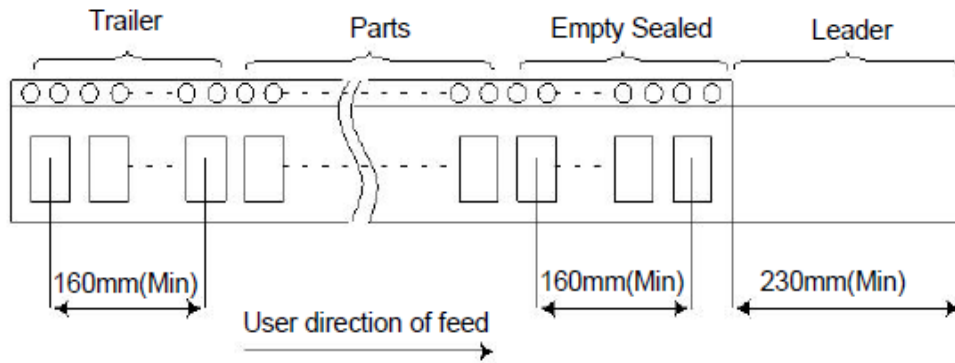


包装 Packing



DIMENSIONS	A	B	C	D	E	F	G	H	(UNIT : mm)
	2.00	7.50	5.45	8.00	16.00	4.00	1.50	1.75	

REMARK :



DIMENSIONS	L	L1	W	W1	pcs / Reel (UNIT : mm)
	178	13	20.5	17.5	Standard Reel Quantity is 1,000 pcs per reel